

# Committed to **Superior** **Quality & Results.**



# About Us

We would like to take this opportunity to present ourselves as a premier contracting company based in (LOCATION). **SAFI AL KHALIJ. Gen. Cont. Est.** provides engineering and construction that is affordable, diverse, and high-performing. Infrastructure and technical resources we have Because of the strong technical team we have assembled, our staff, employees, and customers have come to trust us. We provide cost-effective, high-quality, and timely delivery of our services and products to fulfil customer requirements and expectations in line with national and international legislative norms and standards.



Let us  
**help you**  
create.



## Mission

As you achieve sustainable results,  
offer value for the client!



## Vision

To be recognized for our expertise to  
offer comprehensive industrial & plant  
maintenance solutions.

# Mechanical Work

In order to assist our customer with maintenance, overhauls, upgrades, repairs, and installation works on all types of stationary equipment, **SAFI AL KHALIJ. Gen. Cont. Est** has built a strong mechanical engineering branch.

All welders have undergone independent third-party testing and certification to a 6G standard. For welders and fabricators, internal training programme Revamping is the process of adding features and expanding the total capacity of an industrial facility that is already operational, typically by replacing flow rate-limiting equipment (debottlenecking).



- Internal and strip lining replacement for stationary machinery
- modification of stationary equipment in accordance with inspection suggestions
- changing the furnace and heater tubes
- replacement of reformer tubes, headers, and pigtails

# Manpower

We successfully provide labour services and labour force to a variety of businesses. Our personnel supply services are constantly useful in finding the best employees for the required roles at various firms. Time, energy, and our clients' money are all saved as a result. We provide labour and people to meet the needs of businesses in the engineering, auto, and pharmaceutical sectors.

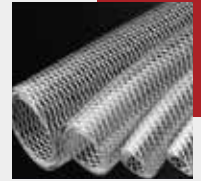




# Piping Material

**SAFI AL KHALIJ. Gen. Cont. Est** is the supplier of a wide Range of Seamless and Welded pipes in all Grades – carbon steel , Stainless steel, Alloy steel, Duplex, Super duplex and Higher alloy in sizes from 1/8" to 120" NPS.

SAFI AL KHALIJ.Gen.Cont.Est is a complete integrated solutions provider that can provide the client a solution by offering a comprehensive range of Pipes, Valves, Flanges & Fittings, Fabrication and packaged engineered solutions for all piping systems on a 'turn-key' basis to meet any project requirements. Piping Systems Company covers the complete range with in-house and outsourced solutions.



## Valves, Fittings Instrumentation



**SAFI AL KHALIJ. Gen. Cont. Est** is the supplier of gate, globe, check, ball, butterfly valves etc. in all varieties of carbon steel, stainless steel, duplex and other special alloys. **SAFI AL KHALIJ. Gen. Cont. Est.** supply a complete range of butt-weld and forged fittings in carbon steel and stainless steel products in all sizes and construction from 1/2" to 96 NPS

Materials are approved manufacturer with international recognitions and approval. Our materials are thoroughly checked and inspected by our QC personnel to ensure that materials being received and delivered are of high quality and according to standards set by the industries.

# Civil Engineering and Work

The Civil engineering division of **SAFI AL KHALIJ. Gen. Cont. Est.** has dedicated, professional & experienced engineers, who are committed to convert ideas into action. We not only provide quality services in the civil engineering field but also maintain relationships with our customers.

Clients of small and big magnitude, private and government and others with their specifications are served by SAFI AL KHALIJ.Gen.Cont.Est.



## Back Filling

**SAFI AL KHALIJ. Gen. Cont. Est.** committed to supply different kinds of backfill materials to its client with approved standards. There are varieties of backfill material used in Kingdom of Saudi Arabia as per the nature of the job. It varies from Sand to Aggregate Base Course. We also supports its client with the transportation facilities



## Civil Related Material Supply

We are specialized in supply of Mechanical, Piping, Industrial Electrical, Plumbing, Sanitary, Welding Materials, Safety Materials and Industrial Tools. The essence of the business which has resulted from the hard efforts and dedication of our staff members. High quality and better performance of the products, top end brand principals. And professional after sales service.

Since its interception CBM has proved as an inimitable source for off limit material in its sector. Our unique sourcing ability has gained our clients confidence and trust. We supply most of the requirement locally from stock competitively and promptly



# Stretcher

Stretcher Safety Equipment company exports medical devices, safety equipment all over the world. **SAFI AL KHALIJ** is distributors for stretcher Products in Saudi Arabia. Their products include stretchers, first aid equipment, fire fighting safety products, lifesaving equipment.



# Fabrication Work

**SAFI AL KHALIJ. Gen. Cont. Est.** offers a full assortment of fabricating equipment, including shears, press brakes, panel lamination lines, turret presses and welding stations. These enable us to engage in a vast array of products and projects. Our skilled craftsmen, with decades of experience and a sense of unmatched quality, execute everything from prototypes to complete projects, offering our customers services from concept to completion.



# Scaffolding work

**SAFI AL KHALIJ. Gen. Cont. Est.** is a leading manufacturer of scaffolding in Saudi Arabia, providing safe and durable structural systems for construction, renovation and maintenance work. We supply a range of scaffolding products, including Kwikstage, Cuplok and Ringlok systems, table formwork, tubes, couplers and boards as well as aluminum system scaffolds and ladders. Our company is known for its emphasis on safety and rigorously tests all its products before supplying to clients.





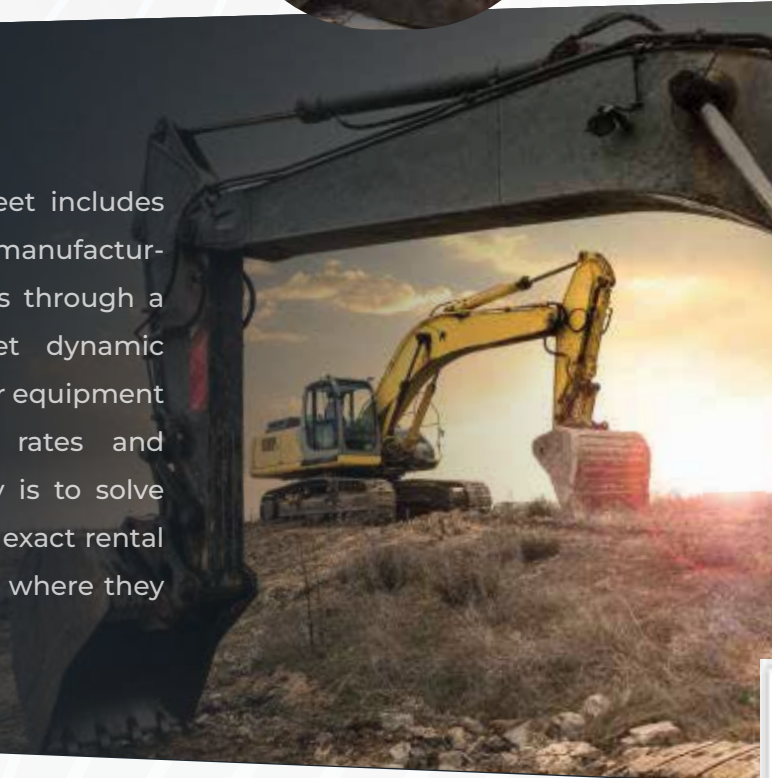
# Scrap Materials

**SAFI AL KHALIJ. Gen. Cont. Est.** has been in scrap and demolish business for many years in Eastern Province of Saudi Arabia. We collect ferrous and non ferrous, link scrap, aluminum scrap, electric scrap, plastic and wooden scrap, copper scrap, hardware scrap, machine and IT scrap, paper and organizer scrap, building and development material waste scrap, cable electric wire scrap, old machinery scrap and so forth.



# Equipment Rental

**SAFI AL KHALIJ. Gen. Cont. Est.** rental fleet includes some of the latest models from the leading manufacturers, all kept in the best possible conditions through a rigorous maintenance program. To meet dynamic requirements and with reliability in mind, our equipment can be proved at Competitive rental rates and Daily/Weekly/Monthly intervals. Our priority is to solve our clients' business requirements with the exact rental equipment and support services they need, where they need it, and when they need it.



# Engineering Drawing

We undertake all types of drafting & details works, such as preparing shop drawings, Red line drawings, As-built drawing for road works, bridges, Industrial, Commercial, residential & all types infrastructure projects. We also provide material quantity's for all the discipline as per provided drawings.

## Details of our work:

- Preparing shop drawing on all discipline with respecting to IFC drawings.
- We prepare coordination drawing as per Client requirements.
- We provide 3d model for whole project.
- Drafting & details on reinforcement details.
- Providing Bar bending scheduling (BBS) as per BS & ASTM standard.
- Providing material quantity for all discipline.
- Providing red line drawing with respecting to FCN & TQ.
- Providing As-built drawing with respect to red line drawings.
- We prepare fabrication drawings for steel stretchers.
- We prepare an isometric drawing for piping & plumbing.
- We provide profile drawings & coordinate for road works.
- We work on Auto cad 2D 3D, 3Ds max, etc.



## مؤسسة صافي خليج للمقاولات العامة SAFI AL KHALIJ General Contracting Est.



8312, Othman Bin Afan Road, Riyan Area 4870  
Dammam, Kingdom of Saudi Arabia

+966 13 841 1844 | +966 51 019 4176

info@safi-ksa.com



www.safiksa.com